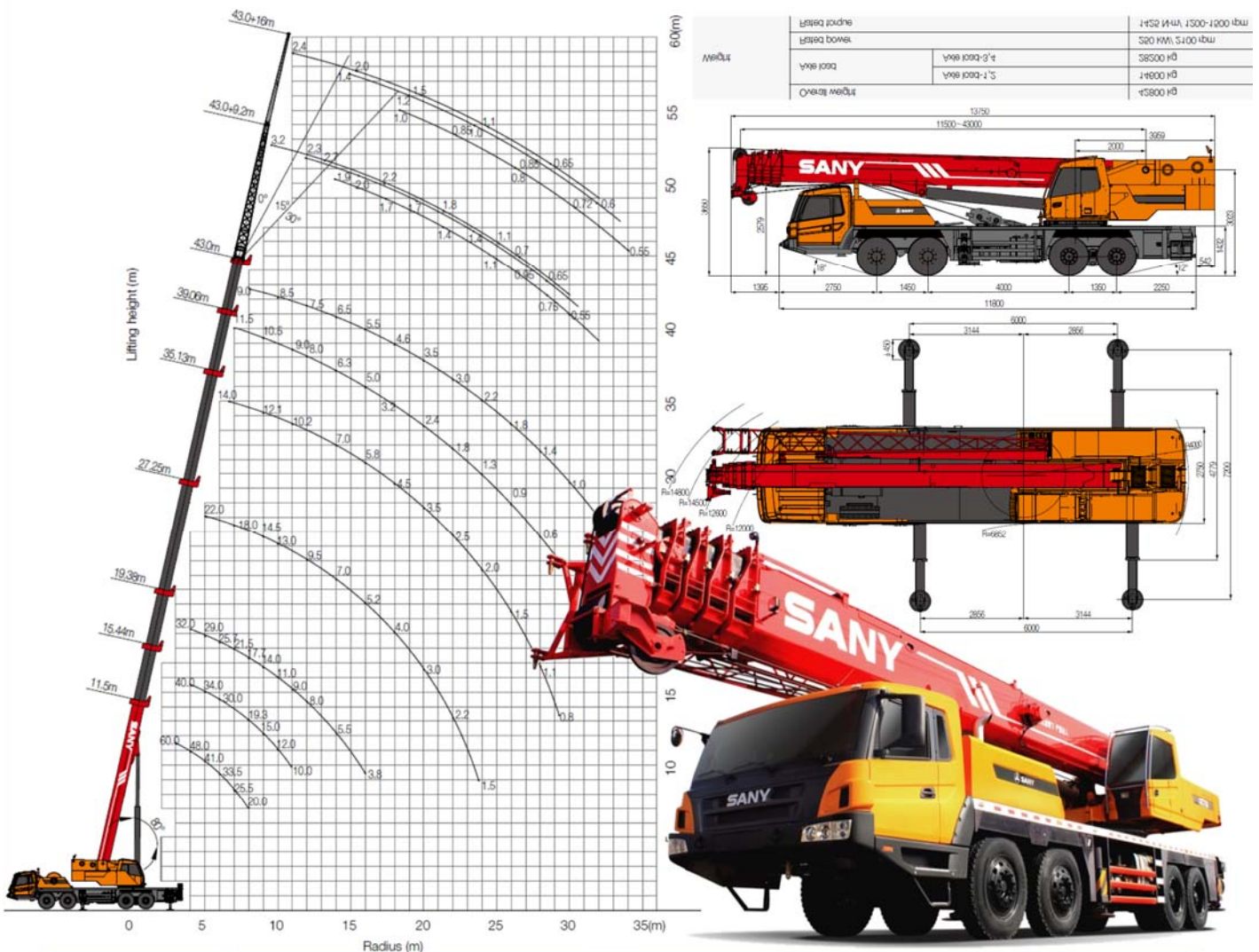


60 TN - SANY STC 600



Working range(m)	Main boom											Working range(m)
	11.5	15.44	19.38	19.38	27.25	27.25	35.13	35.13	39.06	39.06	43	
3	60000											3
3.5	54000											3.5
4	48000	40000	32000	21500								4
4.5	44000	37000	31000	21500	22000	15000						4.5
5	41000	34000	29000	20000	22000	15000						5
5.5	38900	31000	27500	19000	21500	14500						5.5
6	33500	30000	25700	18100	21000	13700	14000	9000				6
6.5	28500	28000	23900	17500	19500	12800	14000	9000				6.5
7	25500	25000	21500	17000	18000	12100	14000	9000	11500	9000		7
7.5	23000	21500	18900	16200	16800	11500	13500	8500	11500	9000		7.5
8	20000	19300	17700	15600	15800	11000	13000	8500	11000	9000	9000	8
9	15700	15000	14000	13800	14500	10000	12100	7800	10500	8500	8500	9
10		12000	11000	12400	13000	9000	11500	7100	10000	8000	8500	10
11		10000	9000	11000	9900	8200	10200	6400	9000	7500	8000	11
12		8000	8000	9100	9500	7500	9000	5800	8000	7000	7500	12
14			5500	6800	7000	6300	7000	5000	6300	5900	6500	14
16			3800	4800	5200	5400	5800	4400	5000	4000	5500	16
18					4000	4500	4500	3200	3200	3500	4600	18
20					3000	3300	3500	2700	2400	2800	3500	20
22					2200	2500	2500	2400	1800	2100	3000	22
24					1500	2000	2000	1900	1300	1650	2200	24
26							1500	1500	900	1300	1800	26
28							1100	1000	600	900	1400	28
30							800	1100	700	1000	1000	30
32								900		700	700	32
34										500		34
Number of lines	12	10	8	8	6	6	4	4	4	4	3	Number of lines
Telescoping condition(%)												
Modes	I,II	I	I	II	I	II	I	II	I	II	I,II	Modes
2nd boom	0	50	100	0	100	0	100	0	100	50	100	2nd boom
3rd boom	0	0	0	33	33	66	66	100	83.3	100	100	3rd boom
4th boom	0	0	0	33	33	66	66	100	83.3	100	100	4th boom
Top boom	0	0	0	33	33	66	66	100	83.3	100	100	Top boom